

Rudderstock House 250

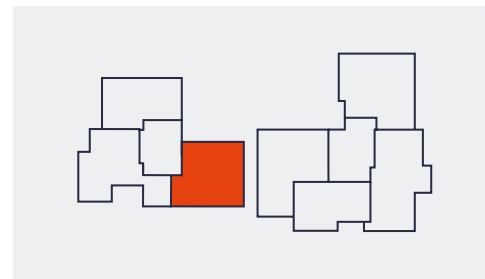
TWO BEDROOM APARTMENT

KITCHEN/LIVING/DINING ROOM	6.94m x 4.27m	22'9" x 14'0"
MASTER BEDROOM	4.08m x 3.45m	13'5" x 11'4"
BEDROOM 2	3.62m x 3.54m	11'11" x 11'7"

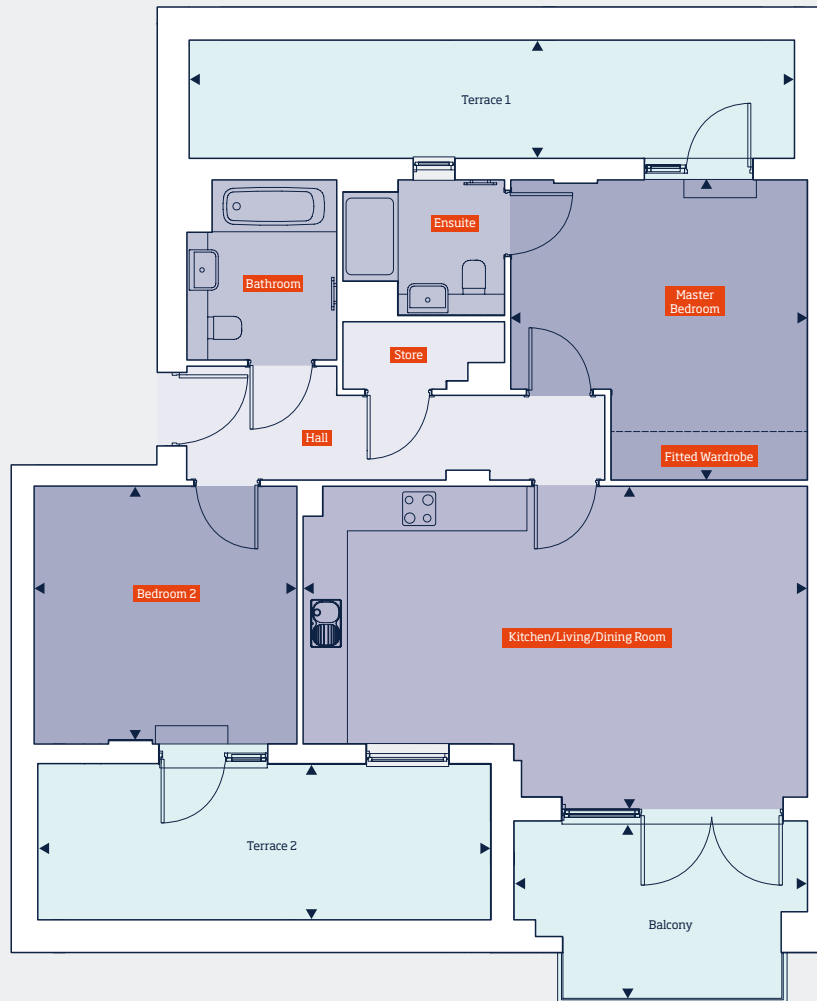
GROSS INTERNAL FLOOR AREA (EXC. TERRACES/BALCONY) **77.00 sq m** **828.82 sq ft**

TERRACE 1	8.36m x 1.64m	27'5" x 5'4"
TERRACE 2	6.25m x 2.15m	20'6" x 7'1"
BALCONY	4.10m x 2.45m	13'5" x 8'0"

LOCATOR



- 5th Floor
- 4th Floor
- 3rd Floor
- 2nd Floor
- 1st Floor
- Ground Floor



Disclaimer: Floorplans shown for Southall Village, Canalside are approximate measurements only. Exact layouts and sizes may vary. All measurements are taken from the widest point and dimensions are subject to minor variations. The dimensions are not intended to be used for carpet sizes, appliance sizes or items of furniture. To improve legibility these plans have been sized to fit each page. As a result this plan may not be at the same scale as those on other pages.