

THE PORTLAND THREE BEDROOM TOWNHOUSE

282

ACCOMMODATION

Lower Ground Floor

Kitchen	4.64m x 3.09m	15'22" x 10'14"
Dining/Family Room	5.45m x 3.01m	17'88" x 19'88"

Ground Floor

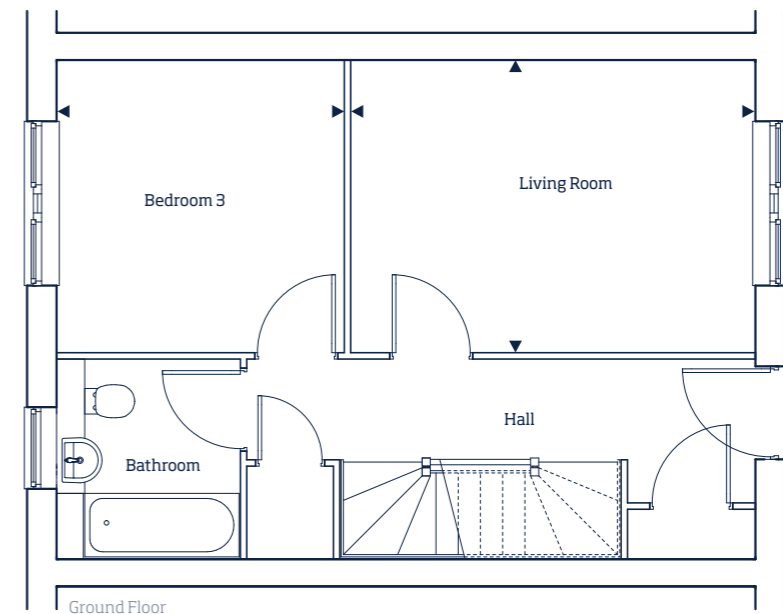
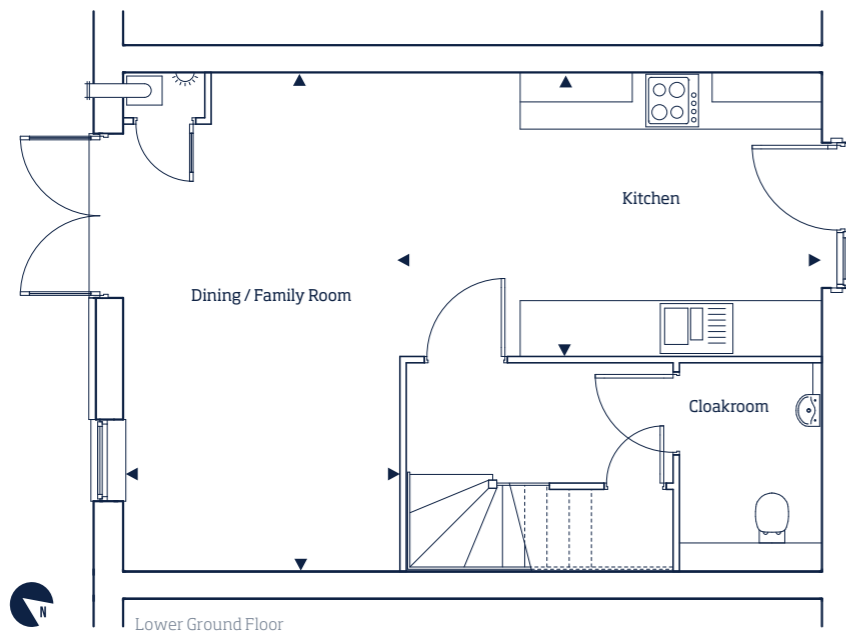
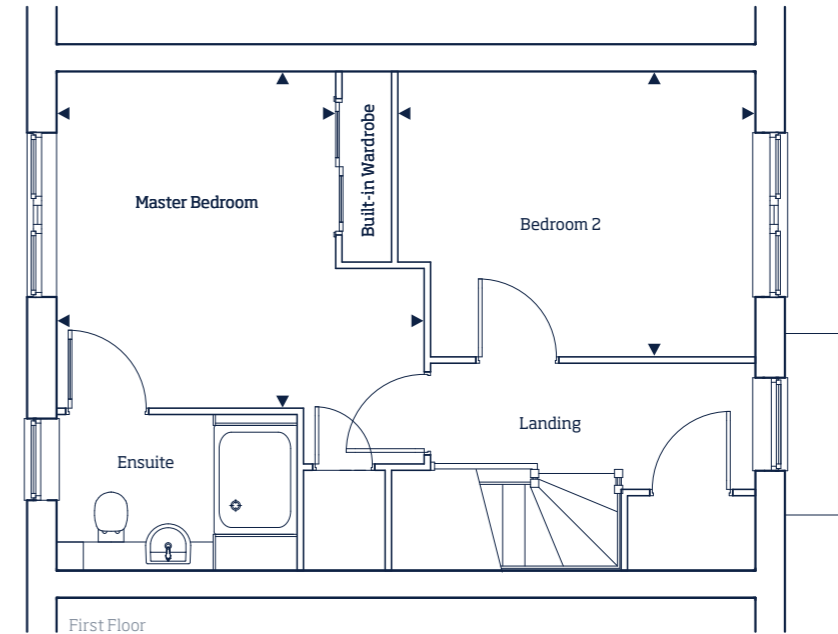
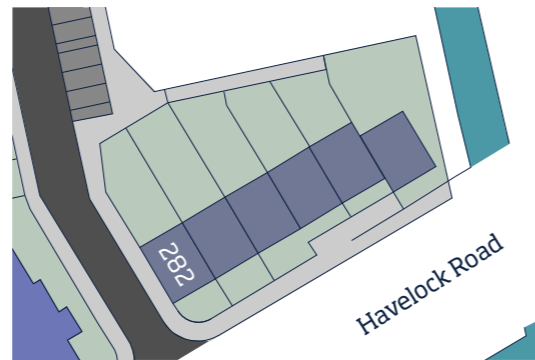
Living Room	4.42m x 3.19m	14'50" x 10'47"
Bedroom 3	3.19m x 3.13m	10'47" x 10'27"

First Floor

Master Bedroom	4.01m x 3.67m	13'16" x 12'04"
Bedroom 2	3.90m x 3.11m	12'80" x 10'20"

Total Area 127.0 sq m 1,367 sq ft

LOCATOR



Disclaimer: Floorplans shown for Southall Village, Canalside are approximate measurements only. Exact layouts and sizes may vary. All measurements are taken from the widest point and dimensions are subject to minor variations. The dimensions are not intended to be used for carpet sizes, appliance sizes or items of furniture. To improve legibility these plans have been sized to fit each page. As a result this plan may not be at the same scale as those on other pages.