

# The Croft Two Bedroom House

# SOUTHALL VILLAGE BY THE PARK

Units 177-187 & 196-206

## ACCOMMODATION

### Ground Floor

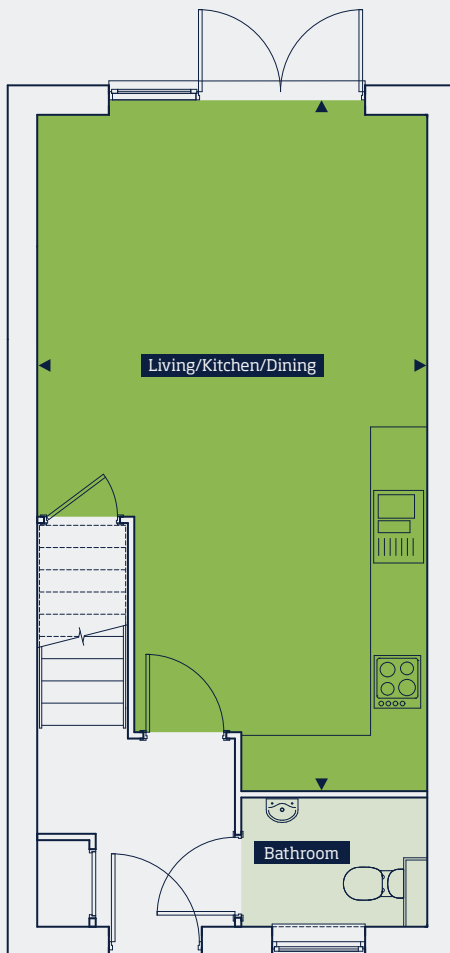
Living/Kitchen/Dining	7.46m x 4.30m	24'6" x 14'1"
-----------------------	---------------	---------------

### First Floor

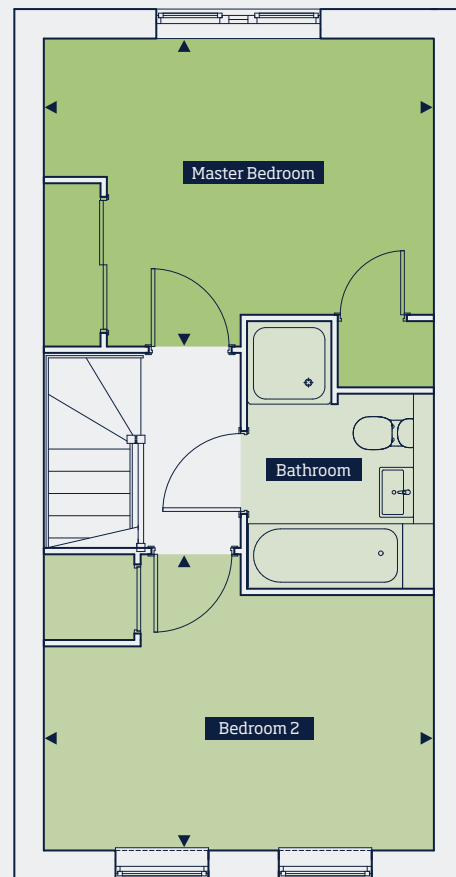
Master Bedroom	4.30m x 3.85m	14'1" x 12'8"
Bedroom 2	4.30m x 2.82m	14'1" x 9'3"

<b>Total Area</b>	<b>77.0 sqm</b>	<b>829 sq ft</b>
-------------------	-----------------	------------------

## LOCATOR



Ground floor



First floor

Disclaimer: Floorplans shown for Southall Village, Parkside are approximate measurements only. Exact layouts and sizes may vary. All measurements are taken from the widest point and dimensions are subject to minor variations. The dimensions are not intended to be used for carpet sizes, appliance sizes or items of furniture. To improve legibility these plans have been sized to fit each page. As a result this plan may not be at the same scale as those on other pages.